



Serving Customers Since 1924

2,000 LB. Trailer Axles and Components



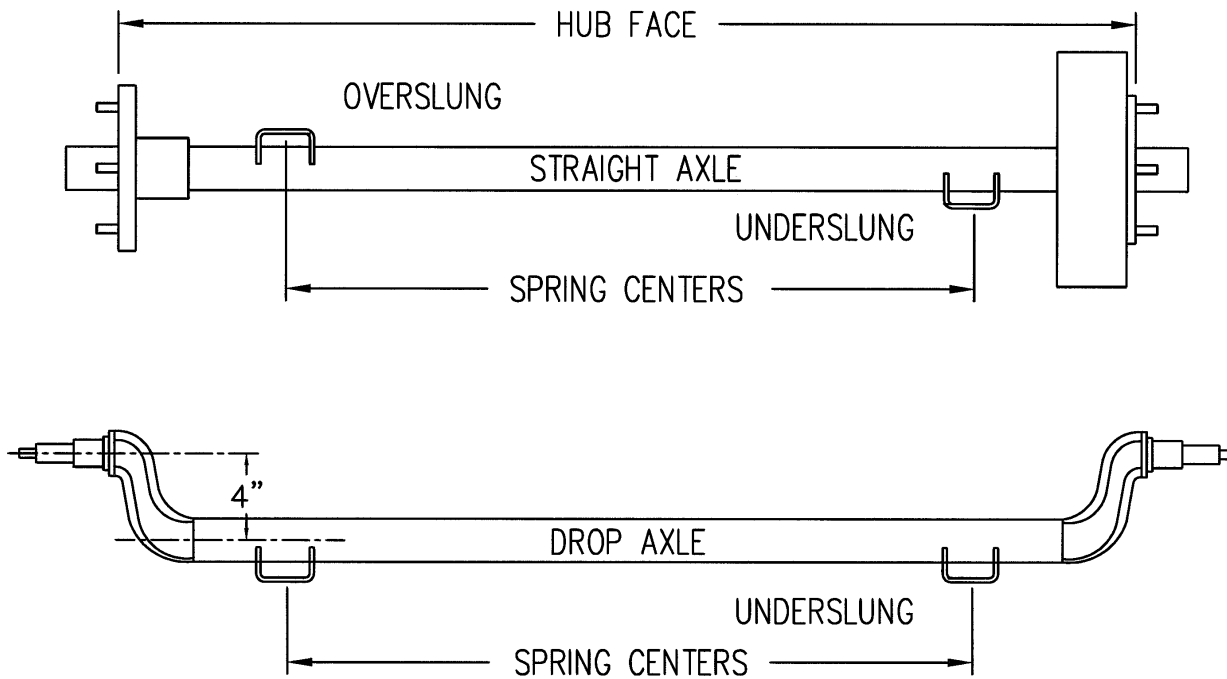
Distributor of



Genuine Replacement Parts

ISO 9001 CERTIFIED

Measurement Points:



STANDEN'S WARRANTY

STANDEN'S LIMITED warrants Axle products manufactured or supplied by us to be free from defects in material and workmanship under normal use and service for a period of one year from date of manufacture of the product.

We will repair or replace without charge, FOB our plant, or at our option give credit for components shown to be out of specifications or defective.

This replacement warranty is limited to parts only and does not include any labour charges, towing charges, down time costs or consequential costs due to the defective product.

The warranty on our product is void when:

1. Axle capacity is exceeded.
2. The brakes are not adjusted before the trailer is put into use.
3. Products are not installed according to factory recommendations and maintained.
4. Proper maintenance is not carried out.
5. Our products are altered or changed from original factory specifications without our knowledge and consent.
6. Damage occurs due to destructive driving or road conditions.
7. The product sits idle longer than 3 months and is not pre-serviced before being put into service.

This Limited Warranty applies to the first use purchaser of the product only.

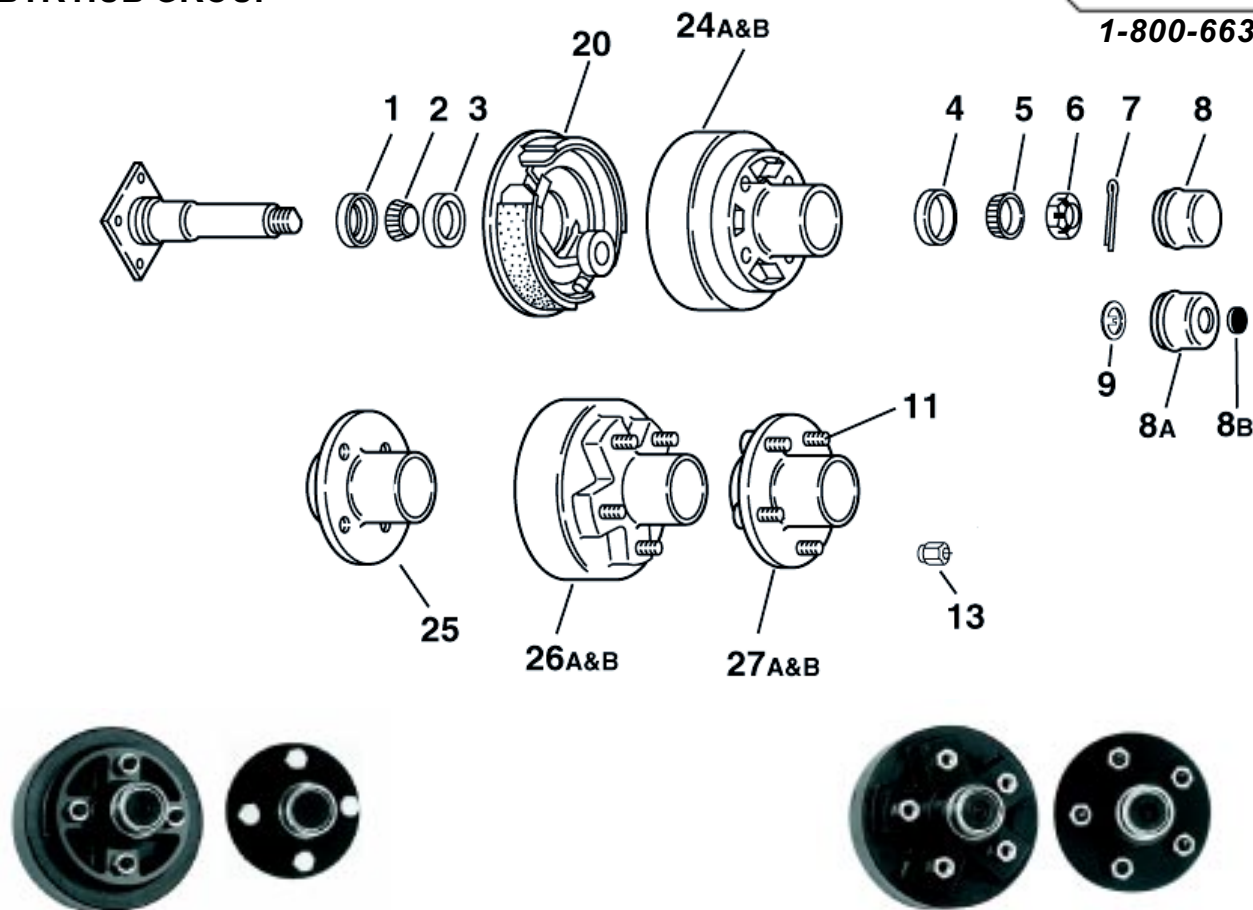
This Limited Warranty is the only Warranty offered by us and therefore no employees, agent, salesperson or other person has the authority to offer or make any other Warranty.

"Where QUALITY Counts!"

**2,000 LB. CAPACITY
S-20 - BTR HUB GROUP**



1-800-663-7800



STANDARD GREASE LUBE PARTS

Item	Part #	Description
	602	Bearing Kit - 1 Hub
1	10-9	10-9 Grease Seal
2	L44649	Inner Bearing Cone
3	L44610	Inner Bearing Cup
4	L44610	Outer Bearing Cup
5	L44649	Outer Bearing Cone
6	821-3	Spindle Nut
7	880-2	Cotter Pin (not used with E-Z Lube)
8	DC-11	Grease Cap
8A	DC-11A	Grease Cap for E-Z Lube
8B	85-1	Rubber Plug for E-Z Lube
9	841-5	Tang Washer for E-Z Lube

HUBS

Item	Part #	Description	Bolt Circle
25	8-441	Plain Hub - tapped	4 on 4.00
24A	9-441	Hub & Drum - tapped for use w/electric brakes only	4 on 4.00
24B	9-441H	Hub & Drum - tapped for use w/hydraulic brakes only	4 on 4.00
27A	8-451	Plain Hub - tapped 5 1/2" dia. flange for 8"	5 on 4.50
27B	8-451-LD	Plain Hub - studded 6 1/2" dia. flange for 12" and 13" wheels	5 on 4.50
26A	9-451	Hub & Drum - studded for use w/electric brakes only	5 on 4.50
26B	9-451H	Hub & Drum - studded for use w/hydraulic brakes only	5 on 4.50

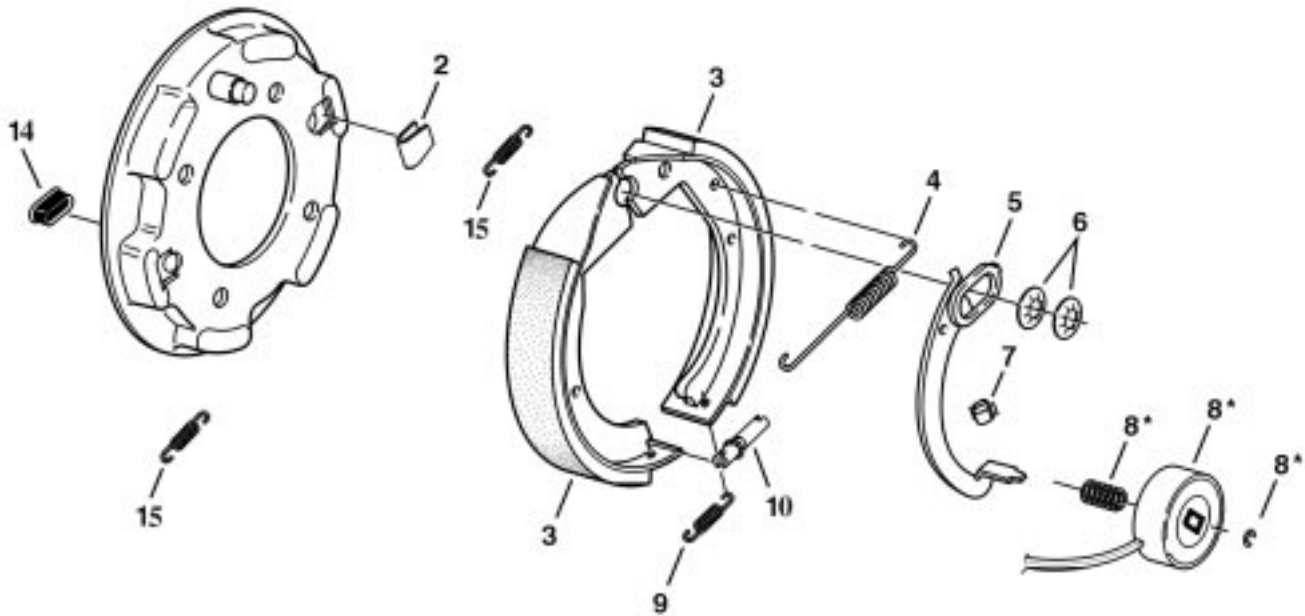
BRAKES

Item	Part #	Description
20	12-709	LH 7x1 1/4 Electric
20	12-710	RH 7x1 1/4 Electric
ns	13-711	LH 7x1 3/4 Hydraulic Uni-servo
ns	13-712	RH 7x1 3/4 Hydraulic Uni-servo

STUDS & WHEEL NUTS

Item	Part #	Description
ns	WB-30	1/2-20 Bolt - 90 Deg. Taper
ns	WB-40	1/2-20 Bolt - 60 Deg. Taper
11	DE-04	1/2-20 Wheel Stud
13	WN-2	1/2-20 Wheel Nut

ns - not shown



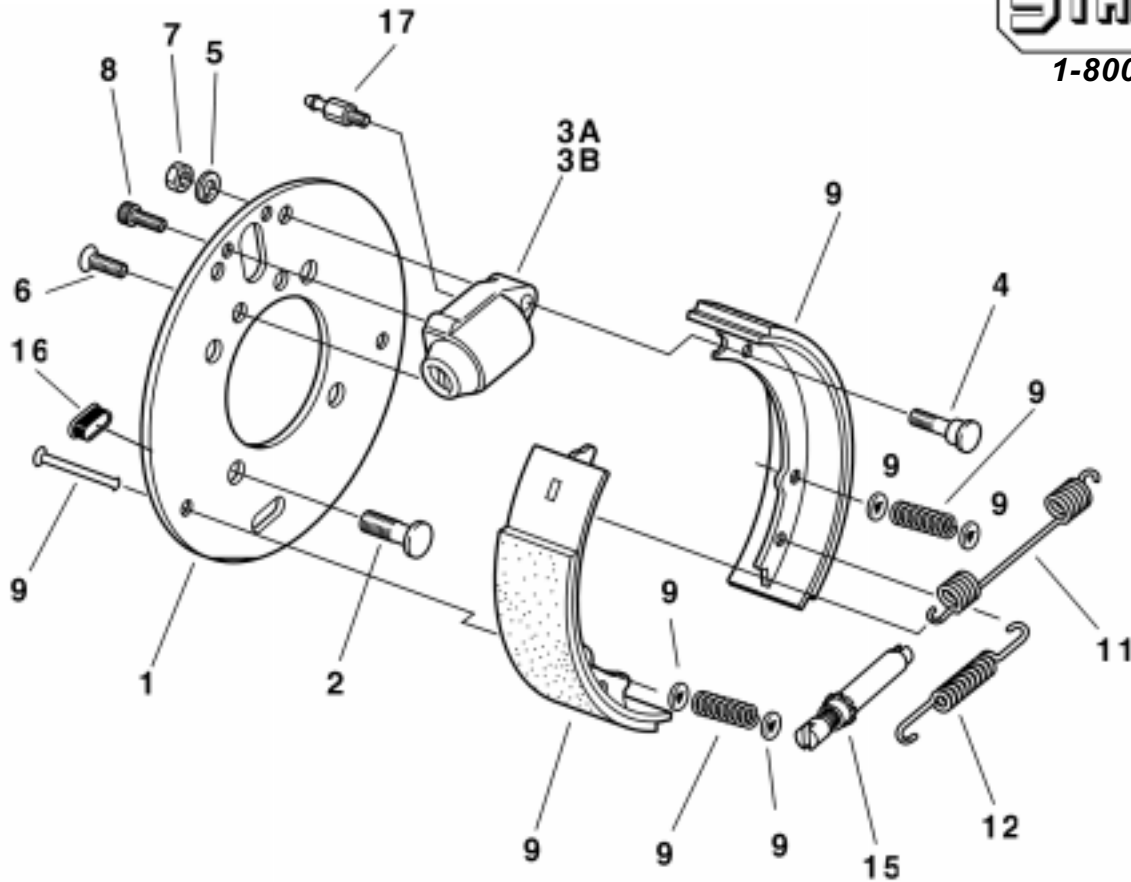
ELECTRIC BRAKES & COMPONENTS

Item	Part #	Qty/Brk	Description
	12-709	1	LH Complete Brake Assembly
	12-710	1	RH Complete Brake Assembly
2 & 4	71-361	1	Spring Kit containing:
		1	#046-023-00 Shoe Hold Down Spring
		1	#046-024-00 Retractor Spring
3	71-45	1	Shoe & Lining Kit containing:
		1	#040-125-00 Primary S&L
		1	#040-049-00 Secondary S&L
5	47-114-01	1	LH Actuating Lever Arm
	47-115-01	1	RH Actuating Lever Arm
6	46-030-00	2	Anchor Post Clip
7	27-005-00	1	Wire Clip
8	71-57	1	Magnet Kit containing:
		1	#042-134-00 Magnet
		1	#046-121-00 MagnetClip
		1	#046-086-00 Magnet Spring
9 & 10	71-323	1	Adjusting Spring Kit
		1	#046-022-00 Adjusting Screw Spring
		1	#043-021-00 Adjusting Screw
14	46-007-00	1	Plug
15	46-114-00	2	Shoe Centering Spring

7 X 1 3/4" HYDRAULIC BRAKE



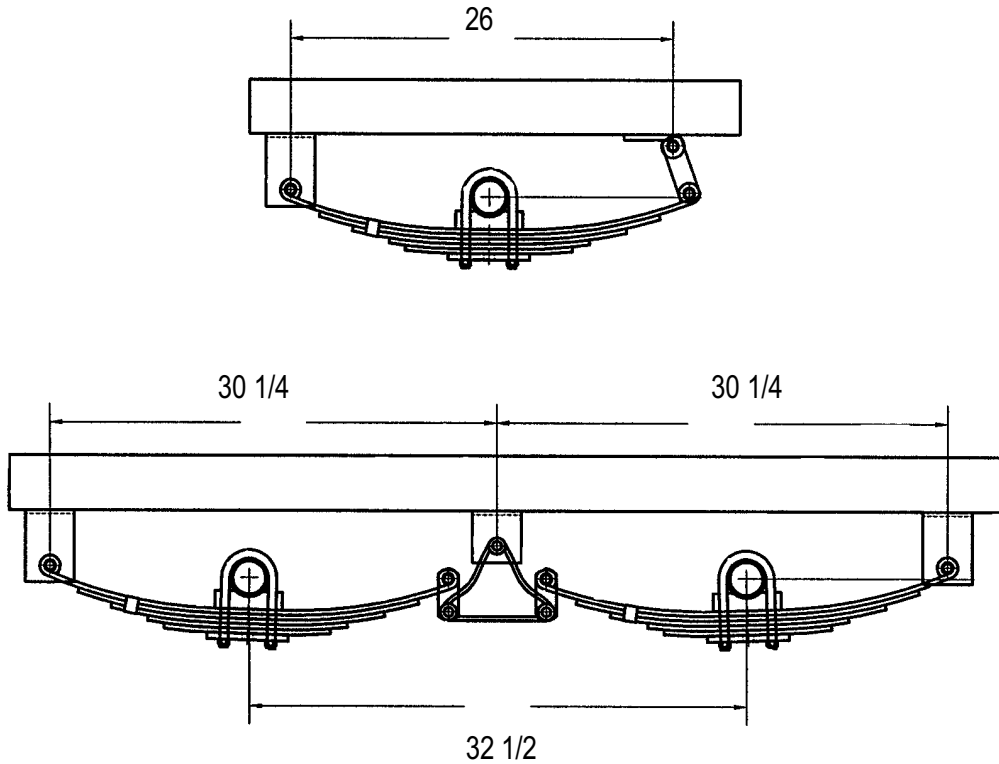
1-800-663-7800



HYDRAULIC BRAKES & COMPONENTS

Item	Part #	Qty/Brk	Description
	13-711	1	LH Complete Brake Assembly
	13-712	1	RH Complete Brake Assembly
1	N/A	1	Backing Plate
2	N/A	4	Mounting Stud - Press-in
3A & 3B	84210	1	Wheel Cylinder Assembly - LH - Attwood
		1	Wheel Cylinder Assembly - RH - Attwood
3A & 3B	54-80-03	1	Wheel Cylinder Assembly - LH - Dexter
	54-80-04	1	Wheel Cylinder Assembly - RH - Dexter
4	N/A	1	Anchor Post
5	N/A	1	Lock Washer
6	N/A	1	Counter Sunk Cap Screw
7	N/A	1	Hex Nut
8	N/A	1	Socket Head Cap Screw
9	19-861	1	Shoe Kit for 1 Axle - Attwood
9	71-466	1	Shoe & Lining Kit - Dexter - containing
		1	#040-327-01 Primary S&L
		1	#040-328-01 Secondary S&L
		2	#046-006-00 Shoe Hold Down Spring
		4	#035-001-00 Shoe Hold Down Spring Cup
		2	#049-014-00 Hold Down Pin
11	46-126	1	Retractor Spring
12	46-127	1	Adjusting Screw Spring
15	43-29	1	Adjuster Screw Assembly
16	46-7	1	Adjuster Slot Plug

Double Eye Spring Suspension



DOUBLE EYE SPRINGS

Part #	Capacity/Spring
5015-3	675 lbs.
5015-4	900 lbs.
5015-5	1000 lbs.

Single Hanger Kits

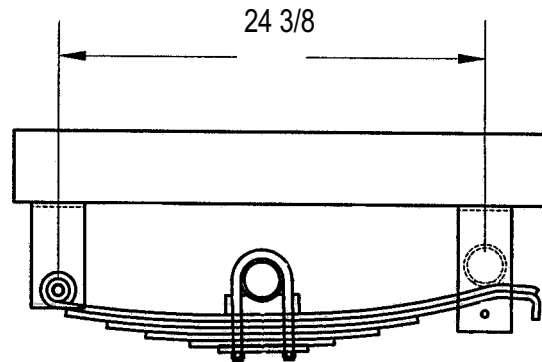
Part #	Description
540-2	Front Hanger
540-10	Rear Hanger Eye
545-3	Shackle Strap
801-1	9/16 Shackle Bolt
810-2	7/16 Flanged Lock Nut

Tandem Hanger Kits

Part #	Description
540-2	Front and Rear Hanger
540-14	Centre Hanger
543-0	Equalizer
545-2	Shackle Strap
801-1	9/16 Shackle Bolt
810-2	7/16 Flanged Lock Nut

Some combinations of hangers and spring mounting may result in insufficient bump clearance.

Slipper Spring Suspension



SLIPPER SPRINGS

Springs

Part #	Capacity/Spring
BT25-6	500 lbs.
BT25-9	750 lbs.
BT25-15	1200 lbs.

Single Hanger Kits

Part #	Description
540-14	Front Hanger
540-15	Rear Hanger Eye
801-1	9/16 Shackle Bolt
810-2	7/16 Flanged Lock Nut
800-1	3/8 x 3 1/2 Bolt
820-1	3/8 Lock Nut

Some combinations of hangers and spring mounting may result in insufficient bump clearance.

WHEELS

Part #	Rim Size	Bolt Circle	Pilot Dia.	Offset	Capacity & psi	Type
15-124-4-1	12 x 4JA	4 on 4.00	2.84	0	1045@90	Eight Spoke
16-124-4-1	12 x 4JA	4 on 4.00	2.84	0	1045@90	Mini-Mod
14-1345-4	13 x 4 1/2JJ	4 on 4.00	2.50	.25 In	1250@50	Conventional
15-1345-5-1	13 x 4 1/2JJ	4 on 4.00	2.62	0	1100@50	Eight Spoke
15-124-5-1	12 x 4JA	5 on 4.50	3.19	0	1045@90	Eight Spoke
16-124-5-1	12 x 4JA	5 on 4.50	3.19	0	1045@90	Mini-Mod
14-1345-5	13 x 4 1/2JJ	5 on 4.50	2.62	.50 In	1360@50	Conventional
15-1345-5-1	13 x 4 1/2JJ	5 on 4.50	3.19	0	1360@50	Eight Spoke
16-1345-5-1	13 x 4 1/2JJ	5 on 4.50	3.19	0	1360@50	Mini-Mod



About Standen's Limited . . .

Established in 1924, Standen's manufactures and distributes trailer axles with capacities up to 20,000-lb. Per axle. Standen's supplies a wide range of axles and suspension components to both Original Equipment and aftermarket customers throughout North America.

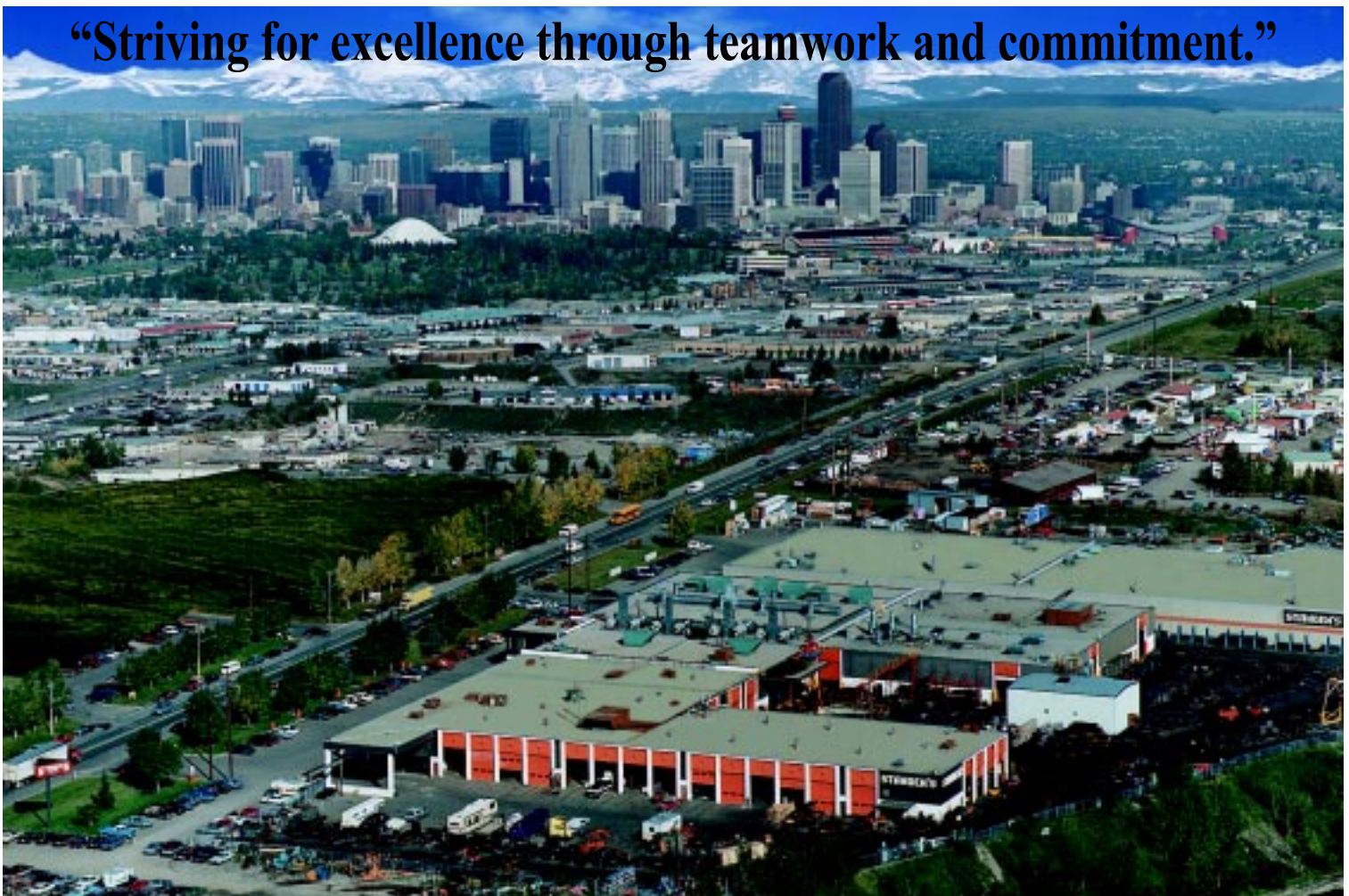
Flexible and responsive, Standen's Axle Division offers a wide range of leaf spring, torsion, and air suspensions built to your specifications. Many component parts for the trailer industry including wheels, tires, jacks, couplers, and fenders are available in addition to axles and suspension hardware.

Standen's also manufactures and ships a wide range of leaf springs, air beams, tillage tools, u-bolts and stabilizer bars to customers on five continents. Standen's manufacturing plants produce over 50,000 tons of products annually.

ISO 9001 certified, Standen's state of the art equipment and processes ensure the very best quality products to meet your needs.

As a supplier of axles to major North American trailer manufacturers, all Standen's OEM-RV trailer axles are CSA approved.

Standen's mandate is to provide the highest quality products and services to all customers. Innovations and continuous improvement are key to remaining a leader in the suspension industry. Developed by Standen's employees, our corporate value statement succinctly describes our operating philosophy:



Standen's Plant 1 and Plant 2 are shown against a backdrop of the City of Calgary and the Rocky Mountains. Plant 3 and Building 4 are not shown.

Standen's Limited

1222 – 58TH Ave. S.E.

P.O. Box 67, Station "T"

Calgary, Alberta T2H 2G7

Ph: 403-258-7827 **Fx:** 403-258-7803

Toll free: 1-800-663-7800

Web: www.standens.com **Email:** info@standens.com